

INSIDE

All the latest news from **INSIDE** Woodside Animal Centre

Early 2022 Edition

REHOMING STORIES on page 4

NEW VET CENTRE UPDATE on page 8

VOLUNTEER STORIES on page 13

 RSPCA Leicestershire Branch

WOODSIDE
ANIMAL CENTRE






Registered charity no. 222621

CONTENTS

- 02 [Welcome](#)
- 03 [Diary](#)
- 04 [Rehoming Stories](#)
- 05 [Events Roundup](#)
- 06 [Winter Tips](#)
- 08 [New Vet Centre](#)
- 10 [It's A Dog's Life](#)
- 11 [Friends We Have Lost](#)
- 12 [Leaving a Legacy](#)
- 13 [Volunteer Stories](#)
- 14 [Fundraising](#)
- 15 [Merchandise](#)

Contact Us

-  www.rspcaleicester.org.uk
-  0116 233 6677
-  animalcare@rspcaleicester.org.uk

Visit Us

Woodside Animal Centre
RSPCA Leicester Branch
190 Scudamore Road
Leicester, LE3 1UQ

Follow Us Online

@woodsideanimalcentre



WELCOME



As I write this at the start of 2022, the promise of Spring is just around the corner. The advent of longer days and slightly warmer weather is always received with relief from those who work outside with animals, and our staff are no exception. Putting on gloves; wearing woolly hats; putting coats on dogs and drying wet paws takes its toll on an already busy team. It's on the icy cold days that I have to admit I quite like being mainly office-based!

At this time of year, we at Woodside start to make event plans for the months ahead. In 2021, we only managed a car boot sale and our Christmas Market. We also reopened our gates to visitors for two days a week and we hope some of you supporters have been able to pop down to view some of our cats and dogs and feel welcomed back at Woodside. We have also welcomed back our volunteers who offer invaluable support to us in these challenging times.

2021 saw a record numbers of puppies and their Mums placed with our fosterers, after a raid on a puppy farm in Wales led to the removal of hundreds of pregnant bitches. We were asked to help, and of course we obliged. They arrived scared and confused, but are blossoming now in their forever homes.

Our big development has been the veterinary building, a huge step for our charity. We are very excited about this long-awaited project and the difference it will make to our animals.

Wishing you all a wonderful 2022.

Amanda Lovett,
Branch Manager, RSPCA Leicestershire Branch

For over 135 years we have been caring for mistreated, abandoned and neglected animals in Leicestershire and Rutland.

Woodside Animal Centre, the home of RSPCA Leicestershire Branch, is a local independent charity.

We rely almost entirely on the generosity of our donors, supporters and the general public to help fund our work to improve animal welfare in our region.

DATES FOR YOUR DIARY

Month	Date	Event
April	Saturday 9 th	Woodside Car boot sale and Easter fun
	Saturday 30 th	Sponsored Dog Walk
May	Sunday 22 nd	Peterborough Marathon
June	Saturday 11 th & Sunday 12 th	Leicester Riverside Festival
July	Saturday 23 rd & Sunday 24 th	Woodside Summer Event - Pet Fest
August	Saturday 13 th & Sunday 14 th	Leicester's 1 Big Weekend
	Saturday 20 th	Woodside Car boot
September	Sunday 4 th	Knighton Park
	Sunday 25 th	Rutland Marathon
October	Saturday 1 st	Woodside Car boot
	Sunday 2 nd	London Marathon
	Sunday 30 th	Leicester Half Marathon
November	Saturday 26 th & Sunday 27 th	Woodside Christmas Event

To find out more or to view our latest event updates, please visit our website!
www.rspcaleicester.org.uk/fundraising

NEW WOODSIDE LOGO

Over the last few months you may have noticed a new version of the Woodside logo appearing on our leaflets, posters and other promotional material.

We have taken the opportunity to simplify our logo to make it easier to read, much more identifiable and we hope you like it.

Don't worry it hasn't cost a fortune and was all done in house, you will see the new logo appearing in more and more places as old leaflets and marketing materials run out and are replaced.



Registered charity no. 222621

FUNDRAISING REGULATOR

RSPCA Leicestershire has joined the Fundraising Regulator (FR) as a member. The FR sets the standards (The Code of Fundraising Standards) that are expected by charity fundraisers across all aspects of their fundraising activities.

Woodside is fully committed to ensuring that all of our fundraising meets the requirements of the law, that we are open about our processes and practices, that we act with integrity and do not mislead the public about our cause or fundraising and that we demonstrate respect in contact with our public.

We are happy and proud to be a member and demonstrate this by displaying this logo on our marketing and fundraising material, and is your guarantee of quality and dependability.



REHOMING STORIES

Elsa:

Elsa was a shy girl who came to us from a cruelty case. Her fur was matted, full of fleas, and dirty. She was underweight, in some pain from her legs, and very quiet. When she came to us, she required a lot of vet treatment to ensure her health became what it should be, with a lot of time and tests processed to ensure we weren't missing anything, including a small surgery to remove a lump.

Our Branch Manager, Amanda, decided to foster Elsa and bring her into a home with a confident male dog and a loving environment. We thankfully found Elsa a very loving forever home with a lovely couple with plenty of experience with German Shepherds. They still bring Elsa to see us here at Woodside and have given her the life of luxury she deserves.



Cody:

Cody ended up being one of the longest residents we've recently had in our shelter, staying for a total of 215 days! He has lived a chaotic life, he came into the RSPCA care as a case dog, after being found locked in a crate very emaciated. He was found with another dog and after a few squabbles, they were both housed separately with an action plan to improve their weight and behaviour set. On his journey to find his forever home we encountered a few bumps along the way. After a few false starts, we are very proud to see Cody now grow and thrive within the perfect family for him. His new family is patient, has continued his development, and now with a new lease of life, Cody is the happiest he's ever been.



Spook:

Spook came into the care of the RSPCA as a stray cat without a home. Our inspectors thought the owners may have moved house and left him behind. Thankfully, a kind neighbour had taken him in and then called us to find him a new home. He was an incredibly shy cat when he came into the shelter and was not comfortable around being handled or petted. He stayed with us for 8 whole weeks, continuing to be shy and only warming to a few people.

Fortunately, his forever home was ready and waiting for him and the loving adopter Jon was excited to bring him home. Whilst being with Jon, Spook has come out of his shell, showing his playful side and more importantly, learning the joy of cuddles and fuss! We're so happy about this happy ending for Spook and hope he enjoys the loving family he deserves!



FUNDRAISING ROUND UP

With Covid 19 still making a big impact, 2021, like the previous year, proved to be very challenging when trying to arrange events here at Woodside. We did however, manage to organise a car boot in September and the Christmas Market.

The Car Boot was held on the 21st September. We enjoyed the opportunity to open our gates and welcome our supporters and the public once again, to our first car boot in a very long time.



Christmas at Woodside

CHRISTMAS AT WOODSIDE

We were unsure whether the Christmas event would run but got the go ahead late on. As a result, many of our regular stall-holders were unable to come. But Santa said he wouldn't miss out on coming to Woodside; he parked his sleigh near the woods and proved popular with kids and adults alike. We had a good selection of different stalls including crystals, flowers, pictures, child amusements, clothing, dog treats and equipment and food stalls. We enjoyed live music from Syston Brass Band and a live band called 60's Sounds.

Although Covid once again had an effect on visitor numbers, we still took nearly £10,000. We look forward to bigger and better things in 2022.

During lockdown we had many children holding cake sales to raise funds for Woodside and we thank all those incredible people who have taken their valuable time to support us during this very difficult time.

All of the major supermarkets - Asda, Sainsbury's, Tesco and Morrisons have all donated food to us regularly. Thanks for your amazing support, we really appreciate it.



Welcome to Woodside

Particular thanks goes to Poundstretcher as they nominated us as their Charity of the Year and have supported us in many ways.

We look forward to welcoming you all back to Woodside in 2022. Our list of events is on our web site at <https://www.rspcaleicester.org.uk/fundraising/>



Snapping up great deals!



60's Sounds

WINTER TIPS

Cooler weather- autumn leaves blowing in the wind to ice and snow. With the excitement of autumn and winter also comes a whole host of dangers for your pets and wildlife. Here are a few precautions and tips for how to keep your pets and visiting wildlife safe during these winter months.

1 Help your pet keep warm. With colder days, just like you need your winter coat, your dog may also need a coat, particularly in the wet. Check that your pet's coat is also kept in good condition ensuring it is free from dirt and isn't matted.

2 Treats can be dangerous for your pets. Left over Christmas, Valentines or Mother's Day treats are fun for all the family but be aware of the possible dangers! Chocolates and sweets are very harmful to all pets and should be kept away from them at all times.

3 Be careful of dressing your pet up as part of the celebrations. Dressing up your pet may look cute but can prove to be very stressful for some pets. If you do choose to dress them up, try to limit how long they are dressed up for and don't leave them unattended. Avoid costumes that have elastic on them as this can prove to be a serious choking hazard.

4 Protect your pet from harmful berries and foliage. Fallen berries, fruit, seeds, stems and leaves can be harmful to pets. To protect your pets from munching on potentially harmful berries and seeds, get those gardens checked regularly and be watchful on walks.

5 Protect your pet from sharp branches. Sharp, bare branches can pose a real risk to your pets' eyes whilst they're running around the garden. Ensure that any potential hazards are tidied away and be aware that sticks can also cause problems when being chewed.

6 Think of your pets and wildlife during outdoor celebrations. While some of us may love the sights and sounds of a bonfire, it is often not fun for pets and wildlife. If you have an outdoor gathering at your home, keep pets away from open fires and sparklers. Always check your bonfire for wildlife before setting it alight. Don't forget to protect pets kept outdoors, giving them extra bedding and covering their enclosure

7 Prepare your outdoor pets for the cold. If your pet lives outdoors, they will need special attention during the colder months. Ensure there are plentiful supplies of food and water so that they have as much energy as possible to keep warm. Provide extra bedding and ensure that your pet is protected from the wind and severe weather.

Protecting wildlife during the autumn and winter months

During the autumn and winter months, UK wildlife will experience many changes and it's important to do your bit to help protect it.

Please remember to be careful when strimming or cutting long grass, checking that there are no hedgehogs, frogs, toads and newts that can come to harm. Leave some areas of your garden "wild" to give natural cover to a range of creatures who will benefit from this environment over the autumn and winter months. Create a log-pile or make or buy a "bug hotel" to encourage beneficial minibeasts to hide.

Hedgehogs

After foraging in autumn for fruits, nuts and insects, hedgehogs benefit from supplies of dog food (not pork or fish based) and fresh water to help them to build up for their winter hibernation. Hedgehogs tend to be quite habitual creatures so if you're lucky enough to have one living in your garden, it's likely that they will be there at the same time every evening. If so, be sure to keep your dog or cat indoors during your spikey visitor's visit to avoid them trying to play with them or accidentally causing harm to themselves or the hedgehogs.



Birds and other wildlife

As the days bring the colder temperatures, many of our feathered friends choose to ditch the cold weather in favour of warmer climates. However, there are still many birds who decide to stick it out and actually quite like our chilly British weather. Providing food and water for winter birdlife is a very easy way you can help support the populations of our native birds.

If you're a cat owner, you can fit your cat's collar with a small bell. This will limit the number of birds they catch and is yet another way you can help protect bird populations. However, it is always best to keep cats in overnight as dusk and dawn times are when birds are at their most vulnerable. Keeping them in also avoids road traffic accidents and awful injuries to our feline friends. Make sure bird feeders and supplies of fresh water are well out of reach of cats by placing them in an open area where birds can see if the coast is clear before they settle down for a feed, a drink or a bathe. Fresh water is vital throughout the colder months as birds have to keep their plumage in good order. If at all possible, increase the amount of feeding for birds to boost their ability to survive the cold months. Please also ensure good hygiene at bird feeding stations by cleaning feeders regularly. We can all do our bit to protect our beautiful wildlife by following these simple steps. Please let us know what you did by sending some pictures if you can!

WORKING WITH DIFFICULT DOGS & CATS

Managing Difficult Dogs

If your dog is becoming destructive, overly hyperactive, scratching, aggressive or irritable, then first make sure their basic needs are met.

- Ensure your dog has safe and suitable toys, feeding enrichment, and chews available daily to prevent them from becoming bored.
- Give your dog plenty of opportunities to rest undisturbed when needed.
- Give your dog the opportunity to play with other friendly dogs or people for stimulation.
- Ensure they get the daily exercise they need to be fit, active and stimulated.
- Give your dog ample opportunities for toileting.
- Ensure all who interact with the dog know its behaviour when fit and healthy. Monitor behavioural changes and make notes if certain scenarios make it worse or better.
- Ensure that all training methods used are positive reward methods, avoid harsh potentially painful or frightening training methods.
- Gradually and positively introduce your dog to new things which they might find frightening.
- If all these needs are met, ask yourself if the dog is trying to tell you something, are they in pain?

If you're ever unsure of a dog's behaviour, always visit a vet to rule out any health problems before looking into behavioural or retraining options.

Managing Difficult Cats

Cats can also show behavioural changes, caused by environmental or physical shifts. Keep an eye on the following actions and make notes if you see them.

- High levels of grooming, hiding, sleeping hunched or altered feeding/toileting habits as well as spraying indoors. All of these indicate stress or fear.
- Unwanted habits such as aggression, disappearing or avoiding people all suggest your cat is in pain or frightened.

There is a wide range of causes for the change in a cat's behaviour, consider any alterations to your routine, such as:

- Ensuring your cat can still reach everything they need (e.g. bed, water, litter or outdoors) without passing new things or other animals that may frighten them.
- Ensure they have constant access to safe hiding places where they can escape if they feel afraid. If your cat is scared with no place to escape and hide, it may become aggressive.
- If they don't go outside, provide suitable indoor activities to keep them active.
- Provide safe toys and regular opportunities to play alone and with people. Puzzle feeders or hiding dried food are both good ways to entertain your cat at mealtimes.

If you find a behaviour continues for a long length of time, worsens, or concerns you, always visit a vet to have your cat checked over.



Puppy & Adult Training Classes

BEGINNING THURSDAY 3rd MARCH:

6pm - 7pm: Puppy Class

BEGINNING FRIDAY 4th MARCH:

6pm - 7pm: Puppy Class **FULLY BOOKED**

7:15pm - 8:15pm: Intermediate Class

BEGINNING THURSDAY 28th APRIL:

6pm - 7pm: Advanced Class (Must have completed Intermediate or Good Citizens Silver)

BEGINNING FRIDAY 29th APRIL:

6pm - 7pm: Puppy Class

7:15pm - 8:15pm: Intermediate Class

To book call 0116 233 6677

T&C:

Dogs must be fully vaccinated. The class will take place outdoors.

The first week consists of a talk & session without your dog.

Dogs must be sociable, please contact Lee if you're unsure of anything!

Costs Only
£80!

With additional 10%
off at Woodside
Pet Shop!





NEW VET CENTRE

The power of Pet Visionaries

When you leave a gift in your Will to RSPCA Leicestershire Branch, based here at Woodside Animal Centre, you help to ensure that we can continue to be here to protect animals from cruelty, abuse and neglect and give them a second chance at life. The ultimate example of this is the gift left to us by the wonderful Renée Lorrimer, a long term supporter and former Vice President of Woodside Animal Centre, which has enabled us to build a magnificent veterinary centre here at Woodside.

The idea for setting up the vet centre came from Jeff Kennington, a dedicated Trustee for Woodside since 1990. His dedication and meticulous planning started in 2014 and faced many setbacks, not least being a lack of funding. The breakthrough came in 2018 when we were notified about the very generous gift left to us by Renée and how she wished that we build and run a vet centre at Woodside from the bequest in her Will.

This renewed the energy for the stalled plans and with additional funding from The Edith Murphy Foundation, another long-term supporter of Woodside, Jeff was able to drive forward the project, heading the vet suite planning group. Sadly in August 2020, he died suddenly, shocking us all. His legacy to Woodside was his diligence, enthusiasm and organisation which enabled those plans to be put into action.

Dreams can come true

In March 2021 work finally started to realise the long-held dream, to provide a veterinary facility on the premises at Woodside.



Clearance of the former puppy block, which had been used as a storage facility for donated items for many years, was completed and the demolition team moved in to remove the concrete and metal building and clear the site ready for the next phase.

Once the site had been flattened the job of sinking the foundations began with over 76 tonnes of cement poured into foundation trenches.

By Mid May the building footprint started to emerge from the dirt and walls and a floor started to appear. Progressing everyday until by early July when the walls for the first floor were finished and scaffolding started to appear. One month later the shape of the windows on the second floor could be clearly seen.

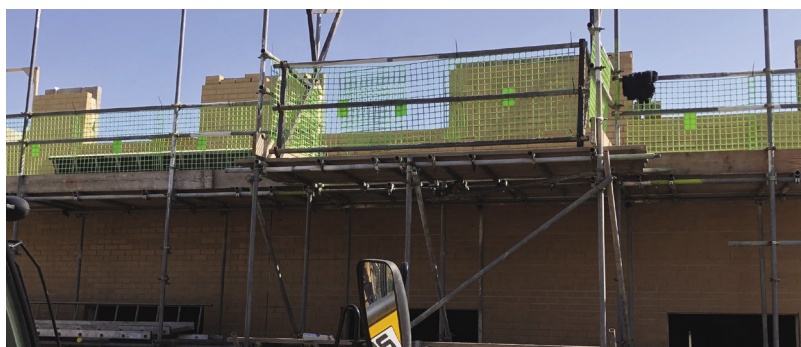
By late August the roof braces arrived and were craned into position and the end of September the roof was completed. Now the building was watertight and the work of fitting the windows and working on the interior could start in earnest.

By October there was a flurry of activity as a raft of contractors descended on the building fitting internal walls, plumbing, electrics, decorating and flooring. The sheer artistry of the copper piping was a sight to behold. Throughout November and December they laboured, and by Christmas many aspects of the build had been completed.

We are confident that the new vet centre will be up and running in 2022, as we started the year advertising for veterinary staff to populate the new centre. Final finessing and the fitting of specialist equipment continues as the long awaited project reaches its conclusion and the dream is finally realised.

The vet centre is going to make a massive difference to the animals here at Woodside. The state-of-the-art facilities include an operating theatre, full body x-ray, a dental centre, recovery and treatment rooms. We have forged close links with the School of Veterinary Medicine and Science at the University of Nottingham, meaning the upstairs facilities will provide areas for the students to study and learn their craft. Whilst the downstairs will provide the much-needed hands on experience that they will benefit from. The real winners however, are the animals, as this ensures that they get the very best treatment, in a timely manner with people that they know and without having to leave the premises.

We want to take this opportunity to thank most sincerely all of our supporters who have helped us to achieve this magnificent dream, and to remember those wonderful Pet Visionaries whose foresight and enthusiasm has helped launch RSPCA Leicestershire Branch, here at Woodside Animal Centre into a new and exciting era of its development.



IT'S A DOGS LIFE

Fostering

“ March 2019 a phone call from my daughter Sarah saying Mum and I have seen a puppy at the RSPCA and that I needed to see him today. I instantly replied no more dogs for us as we had lost our dogs just 9 months prior and I was not ready for the commitment yet.

Sarah went on to say do not worry you just need to foster him for a short period of time the RSPCA will give you everything you need. All it takes is a home.

Charlie's story begins in October 2018 on an illegal puppy farm where over 100 dogs were kept in extremely poor conditions and then seized by RSPCA Inspectors as a cruelty case.

With a court case set for July 2019, we only needed to commit for a few months, I agreed to go and have a look. Sat in the reception at RSPCA Woodside I wondered to myself what was I am doing here, when a little black dog came in his tail wagging so fast, he was scruffy looking bald patches here and there but extremely excited. I watched him for a few seconds before picking him up, truth is I fell in love with him straight away and thought the least I could do was help him in his journey through his early life.

Passing our home visit and fully briefed, we took him home loaded with everything we would need to take care of him. He settled straight in and every day he has not failed to entertain us, making lockdown a joy who would have thought.



As the months went by, we all fell totally head over heels with his personality, his hair grew and there were several vets' visits to help him get into good health.

We received a call from Woodside to say they had won the court case and would like to offer us first refusal, one of the best days of our life. His name was Benji when we took him, but we secretly changed it to Charles, Benjamin, Brown (Charlie) S

There you have it! Fostering is a great way to spend time with a dog a try before you buy opportunity or a lovely way to give a dog a home for some time until they can find a fulltime home. ”

Written by the Failed fosterers, The Browns.

WAG 'N' WASH

Available on an alternating pattern of Weekend or Thursday / Friday Mornings.

Call us to book on 0116 232 4931 or visit our social channels for more information.

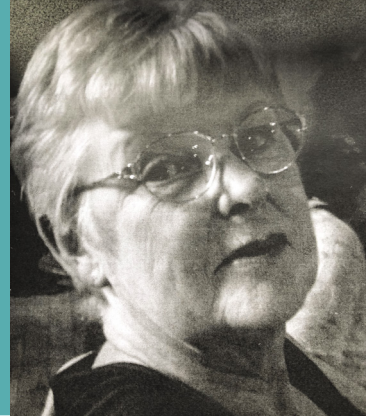
Prices for a Full Groom Start at £15!



FRIENDS WE HAVE LOST

Joyce Roulstone:

In February 2021 we learned of the death of a long-term supporter. Joyce Roulstone. Joyce had many hobbies and interests but this didn't deter her from fund-raising enthusiastically for Woodside and the animals our in care, Vic, her husband, and Joyce took on a number of challenging dogs over the years and dedicating their lives to ensure that their offer of the forever home was the best ever. As self-contained fund raisers they loved to display a variety of crafts and fund-raising items at events and raised hundreds of pounds to support the animals. Joyce's generosity of spirit and determination to do what she could for needy animals means Woodside is poorer for her passing.



Jeff Kennington:

In May 2021 we had to say a sad farewell to one of Woodside's longest serving Trustees. Jeff joined the Woodside team in 1990 and served as the Honorary Treasurer from 1998-2001 and then again in 2017. He was the Branch representative on the RSPCA Regional Board for many years.

Throughout this 30-year service, he was well known for his passion for animals and for the way that the RSPCA presented itself and the work it was striving to do, determined to get animal welfare to the forefront of the public's minds. Jeff's death, after a brief and bravely fought illness, came as a complete shock to all. He is greatly missed by those he worked closely with over the years at Woodside. The Vet Facility, when completed and up and running, will be testament to his dedication over many years and his contribution will be acknowledged with a specially commissioned plaque. RSPCA Leicestershire Branch has been richer for his involvement and he now leaves a gaping hole that few will be able to fill.



Chris Finnerty:

Chris had been a volunteer for approximately 5 years. She was much appreciated as a welcoming face at our Woodside centre reception and as a vital part of our rehoming activities, engaging well with our customers and supporters. Chris was calm and caring and was a real bonus to have in the forefront of the daily public interactions that happen at Woodside every day. She will be greatly missed by all.



Albert Sansome:

Just before Christmas, we learned of the death of Albert who lived in Glenfield and supported the work of Woodside. He was an animal lover and, as a retired decorator, he was keen to turn his attention to the many animal shaped collecting boxes we have and it enabled him to use up the stock of paints that he had! The collection boxes were collected from around Leicestershire and Albert saw that they were freshly painted and able to stand proud before they were returned to their regular spots. He was always cheery and enthusiastic and will be missed by us here at Woodside.



PET VISIONARIES MAKE A MASSIVE DIFFERENCE

When you leave a gift in your Will to RSPCA Leicestershire Branch, based at Woodside Animal Centre, you help to ensure that we can continue to be here to protect animals from cruelty, abuse and neglect and give them a second chance at life.

Every year Woodside cares for hundreds of animals who have fallen on hard times either through mistreatment, abandonment or because their owners can no longer care for them. We ensure these animals receive medical care, rehabilitation, food, a warm bed and the love they need for as long as it takes to find them the homes they truly belong in. Homes where they are treated with love, kindness and respect. A gift in a Will helps ensure their future, we call these people our Pet Visionaries.

A gift in your Will to Woodside is an incredible way to celebrate your love of animals and leave a lasting legacy for dogs and cats in need of help by giving them the second chance of happiness they deserve like Zarla.



How money left in Wills can help animals in need at Woodside

Zarla has an incredible story, coming to us as a cruelty case, seriously emaciated and weighing only 29kg, where a Bull Mastiff cross would normally weigh over 42kg. She also had a serious eye infection which meant she needed urgent surgery to remove the badly infected eye.

There has been a long road to recovery for her, as she had to be on a carefully controlled diet and has undergone a few serious operations on her recovery back to health so she could be adopted.

She not only achieved all of her goals but began to show her true personality. Despite her terrible experiences Zarla is the most good natured girl, who has so much love to give to her new family! She is now up for adoption on our website and we hope will soon find her forever home.



PLANNING AHEAD

Dying without a valid Will is called **INTESTATE** and can create many problems for those left behind, at an already difficult time. The law takes over, declares your estate as intestate and then decides how your assets will be distributed, regardless of your wishes. This means that your property may not go to the people you intended it to.

You should talk to your solicitor about making or updating your Will. Alternatively we can help.

Write your Will for free online today.

We have partnered with Guardian Angels and are now able to offer you an exclusive opportunity to write, or update, a simple Will for free. You can do it online, over the phone or even in-person - whichever way suits you best.



For a copy of our FREE guide to making and amending your Will visit www.rspcaleicester.org.uk/wills
You can email us at legacy@rspcaleicester.org.uk or call on 0116 224 2440.

Gifts in Wills are vital to all areas of our work, so any gift you give, whatever size, will make a big difference to the animals in our care, please become a Woodside Pet Visionary.



Fabulous Hastings Direct Volunteers helping with our Christmas Event.

VOLUNTEER STORIES

We have a range of volunteers in a mixture of positions at Woodside, all of which play a huge part in our charity and create a positive impact on the animals in our care. These roles range from working within our charity shops, walking our dogs, helping within our cattery, supporting us at our events and helping with our admin.

Some of our volunteers have been here with us for a long time, giving us hours of their time. One of these amazing volunteers is Mick, who has worked within our charity shop for over 7 years! She has highlighted the impact that volunteering with us has had. When asked why she volunteers, Mick told us that it was “to meet people and make more friends.” As a popular member of our Birstall community, she has made more than a few lifelong friends and has said that the charity work has made her less lonely.

Another volunteer within our Birstall shop is Alex, who told us that he began volunteering with us as “something to do to fill his free time with”. He now really loves the work he does and is an important member of the team and community. He said, “I enjoy working on the till

the most as it made me confident working with money and talking to people. I would say it has boosted my confidence in working around people and with money!”

One of our cattery volunteers has also told us of the love she has working within the animal centre. Whilst working with us, she enjoys the socializing of the cats and getting to surround herself with so many beautiful animals.

We are always grateful for every single one of our volunteers and the time and commitment they give to our charity. If you think you could make an impact with us and have available time to volunteer within any of our roles, then please pop by one of our shops to collect a volunteer pack or email animalcare@rspcaleicester.org.uk.

After your enquiry, our team will be in contact with you to offer more information about the role you have applied for. We have greatly missed our volunteers during the covid restrictions and look forward to welcoming more back to our team! Due to Covid, our volunteer recruitment process may be delayed/ altered, please email us for more information or if you have any questions.

FUNDRAISING FOR WOODSIDE DURING LOCKDOWN

Ruth and Sue are two Woodside Trustees who raise funds for Woodside. When restrictions meant that regular events couldn't take place, there was a question as to what they could do with the jams and chutneys Sue made and the plants busily growing on. The solution seemed to be to have a stall at the gate! At the time the nation was encouraged to have a daily walk and thankfully many local people did and they liked what they saw so the stall had a regular stream of keen gardeners and supporters coming to see what they could buy to enhance their own plots.

The sales were done socially distanced and all money was quarantined to ensure the virus didn't get passed on and many conversations were held at the gate. Many people wanted the opportunity to catch up with animal and garden related topics. Bruce in the next street kept himself busy crafting the bird feeders, bird boxes, bug hotels,

bat boxes and hedgehog boxes and donated them all for the sales. Where possible, the wood he uses is donated, recycled or are off cuts. All items are lovingly and expertly made for enhancing gardens and for providing good wildlife habitats. The items and plants sold from this stall have proved particularly popular as families endeavoured, over the lockdowns, to make their gardens better environments for humans and animals alike.

Although with restrictions being eased, sales have continued as the seasons have changed and gradually the total climbed to an astonishing £6000 just before Christmas – A very pleasing total for a relatively small venture but all for a good cause! And the sales continue!



GIFT AID: WHAT IT IS AND HOW IT WORKS

Gift Aid is one of the simplest and most effective ways of giving to Woodside. It is run by HMRC and it allows us to claim an additional 25p for every £1 that you donate. So, for example, if you donate £20 we can claim an extra £5, making your gift worth £25. And it doesn't cost you any extra!

As a UK taxpayer you will pay tax on your earnings, savings or pensions, at either a basic rate of 20% or a higher rate of 40%. If you make a donation to charity, this donation will come from money that you have already paid tax on.

I am a pensioner, do my donations qualify?

You may still be paying tax on a private pension plan or a savings account, or capital gains tax if you sell either some property or shares. You are still eligible if you have paid

enough tax during the year to cover the amount we are reclaiming on your donations.

What you need to do

You need to make a Gift Aid declaration for Woodside to claim. You can do this by filling in a form - contact us on [0116 233 6677](tel:01162336677) or see us in person if you have not got one. You must give a declaration to each charity you want to donate to through Gift Aid.

You can also include all donations from the last 4 years.

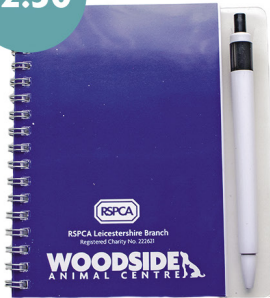
giftaid it

Woodside Merchandise

Available in our Pet Shop and Charity Shops.
Also available to sell at your fundraising events!



£2.50



£3



Visit our shops today to view our selection! Or call us to discuss using our merchandise for your fundraising event on 0116 233 6677!

£ poundstretcher
every penny counts...
The UK's only DISCOUNT pet store

the Pet Hut
big brands, big discounts

WE ARE NOW PARTNERING WITH POUNDSTRETCHER, WHO HAVE SELECTED WOODSIDE ANIMAL CENTRE AS THEIR CHOSEN PET CHARITY FOR 2022!

/poundstretcher
 @poundstretcher
 @poundstretcher

Woodside Pet Shop

Woodside Animal Centre is a self-funded branch of the RSPCA and our pet shop is a non-profit. This means all proceeds made, go straight back into funding the centre and the animals in our care.



We have specially trained staff that can offer advice on food, nutrients, toys, collars and coats!

Bring your four legged friend with you and we can ensure your harness, lead or coat is the perfect size!

Delivery Available!

To within a 10 mile radius of Woodside Pet Shop. Call us on 0116 233 6677 to discuss delivery and prices.



Open 7 Days a Week 10am- 4pm